



SHINGARE  
INDUSTRIES PVT LTD

SHINGARE™  
INDUSTRIES PVT LTD



## OVERVIEW

---

With over 33 years of combined experience in industrial tools, **SHINGARE INDUSTRIES** offers a dynamic range of bolting tools including torque wrenches, tensioning equipment, lifting equipment, suitable pumps and several bolting accessories. We also offer a comprehensive range of machinery for cold cutting & beveling, flange facing, flange maintenance tools and other machining equipment.

Backed by a rich experience of working closely with industry experts, ensures a total understanding of the industry requirements. We are pushing the industry forward with our wide range of tools and services that our customers can operate safely, productively, and effectively.

SHINGARE INDUSTRIES is dedicated to engineer-controlled bolting & piping solutions, through new technologies and utilizing advancements in material technology. Equipped with a robust manufacturing unit, our team is committed to continuous development of innovative products and services offering increased safety, performance and durability.

Our products are designed and engineered by the brightest minds in the industry to make our customers feel invincible and meet all their on-demand requirements. Our tools apart from being safe and efficient; are also easy to use & built to last.

# vision

Our vision is to be the leading supplier of industrial equipment worldwide - through innovation and enhancement of customer productivity with unparalleled service.

# mission

Our mission is to continually develop and supply quality products at a competitive price while fostering a climate where innovative technologies can thrive.

# design

Equipped with the finest cutting-edge technology & technical software like SolidWorks, AutoCAD & Mastercam, our team designs equipment with precision for durability.

# quality assurance

At SHINGARE INDUSTRIES, We ensure Quality output through repeatability, reliability & reproducibility by testing every product through a series of material stress and pressure tests for long-term stability with accuracy and precision.

Our Quality Assurance Plan implements practical solutions through sophisticated methods of analysis. We bring years of experience in the areas that matter most:

- Scientific Data – Driven Statistical Process Control Methodology is used for measuring & controlling quality during the manufacturing process.
- Through systematic FMEA (Failure Mode and Effect Analysis), Our team ensures proactive evaluation to identify risks & solve the challenges of today's technical and economic landscape.





# SHINGOARE<sup>TM</sup>

INDUSTRIES PVT LTD

We intend to build  
**Partnerships**  
that Scale  
**Global Platforms.**

We believe in partnerships.  
We believe in a successful collaboration that adds value to our businesses.  
We believe in win-win.

## Presence Across MENA & West Africa Region



**BHARTIYA**

TUBE TOOLS

# HYDRAULIC TORQUE WRENCHES



**SHINGARE**  
INDUSTRIES PVT LTD

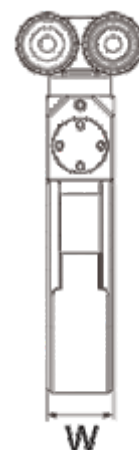
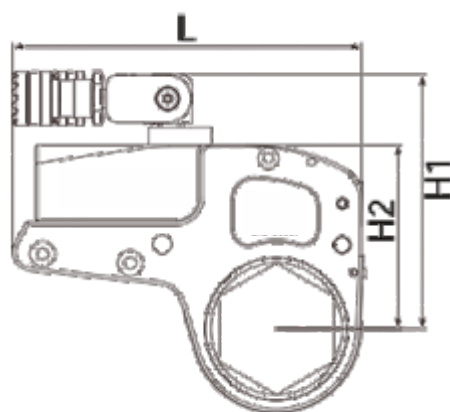


# LOW PROFILE HYDRAULIC TORQUE WRENCH



TUBE TOOLS

SXD series is the professional Low profile hydraulic torque wrench which SHINGARE extends in international market. Compared with the square drive hydraulic torque wrench, this series work directly on the nuts, and its body suits well in narrow space. SHINGARE covers the nuts from S19 to S175. To fulfill all different working situations, the user can just replace the hexagon cassette because the hexagon cassette is changeable, or add the reducer. SHINGARE provides an after-sales service all over the world, and already got the approved by TUV certificate.



## SELECTION CHART

Model	Torque (N.M)	Nut Sizes (MM)	Power Head Weight Kg	Work Head Weight (kg)	Size			
					L1	H1	H2	W
SXD-2A	225-2255	19-55	0.9	1.5	186	132	95	32
	233-2338	60	0.9	1.5	186	135	98	32
SXD-4A	520-5208	34-65	1.6	3.4	251	176	127	42
	575-5755	70-80	1.6	3.4	256	186	137	42
SXD-8A	1043-10438	41-95	3.1	6.3	308	211	154	53
	1123-11233	100-105	3.1	6.3	308	220	163	53
SXD-14A	1852-18521	50-117	4.8	11.4	378	252	200	64
SXD-30A	4188-41882	110-155	10.5	20.5	460	300	253	85
	4459-44593	160-175	10.5	20.5	460	313	265	85

## REDUCERS

Reducer work together with the SXD Ratchet link. One single Ratchet link is suitable for many bolts sizes. (by the reducer, please contact SHINGARE engineer)

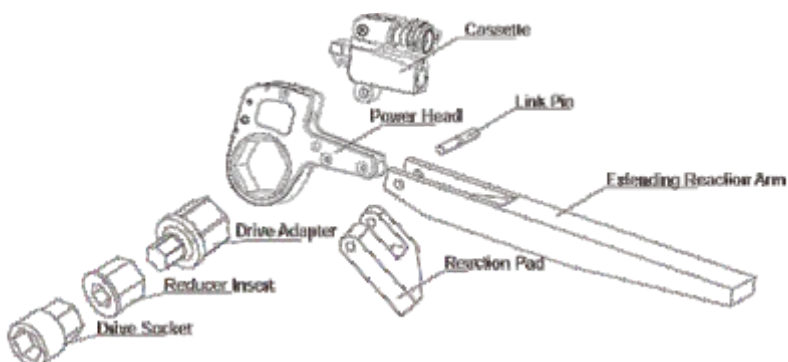


## SPECIFICATION

SXD-2				SXD-4				SXD-8				SXD-14				SXD-32			
Type	R	A	Max Torque	Type	R	A	Max Torque	Type	R	A	Max Torque	Type	R	A	Max Torque	Type	R	A	Max Torque
SXD-2-19	27	16	2328	SXD-4-34	36	16	2510	SXD-8-41	46	22	10941	SXD-14-50	60	31	18521	SXD-32-85	78	28	41882
SXD-2-22	27	14	2328	SXD-4-36	36	15	2510	SXD-8-46	46	19	10941	SXD-14-55	60	28	18521	SXD-32-90	78	28	41882
SXD-2-27	27	11	2328	SXD-4-41	39	15	5021	SXD-8-50	46	17	10941	SXD-14-60	60	25	18521	SXD-32-95	83	28	41882
SXD-2-30	29	12	2328	SXD-4-46	42	15	5858	SXD-8-55	50	18	10941	SXD-14-65	60	22	18521	SXD-32-100	83	25	41882
SXD-2-32	29	11	2328	SXD-4-50	44	15	5858	SXD-8-60	52	17	10941	SXD-14-70	60	19	18521	SXD-32-105	89	28	41882
SXD-2-34	31	11	2328	SXD-4-55	46	14	5858	SXD-8-65	55	17	10941	SXD-14-75	63	19	18521	SXD-32-110	89	25	41882
SXD-2-36	31	10	2328	SXD-4-60	50	15	5858	SXD-8-70	58	17	10941	SXD-14-80	66	19	18521	SXD-32-115	95	28	41882
SXD-2-41	34	10	2328	SXD-4-65	53	15	5858	SXD-8-75	60	17	10941	SXD-14-85	69	19	18521	SXD-32-117	95	27	41882
SXD-2-46	37	10	2328	SXD-4-70	56	15	6474	SXD-8-80	63	16	10941	SXD-14-90	72	20	18521	SXD-32-120	95	25	41882
SXD-2-50	40	11	2328	SXD-4-75	59	15	6474	SXD-8-85	66	16	10941	SXD-14-95	74	19	18521	SXD-32-125	101	29	41882
SXD-2-55	43	11	2328	SXD-4-80	61	15	6474	SXD-8-90	69	17	10941	SXD-14-100	77	19	18521	SXD-32-130	101	26	41882
SXD-2-60	46	11	2414	-	-	-	-	SXD-8-95	71	16	10941	SXD-14-105	80	19	18521	SXD-32-135	104	26	41882
-	-	-	-	-	-	-	-	SXD-8-100	75	17	11774	SXD-14-110	83	19	18521	SXD-32-140	110	29	41882
-	-	-	-	-	-	-	-	SXD-8-105	78	17	11774	SXD-14-115	87	20	18521	SXD-32-145	110	26	41882
-	-	-	-	-	-	-	-	-	-	-	-	SXD-14-117	87	19	18521	SXD-32-150	116	29	41882
-	-	-	-	-	-	-	-	-	-	-	-	-	-	-	-	SXD-32-155	116	26	41882
-	-	-	-	-	-	-	-	-	-	-	-	-	-	-	-	SXD-32-160	128	36	44593
-	-	-	-	-	-	-	-	-	-	-	-	-	-	-	-	SXD-32-165	128	33	44593
-	-	-	-	-	-	-	-	-	-	-	-	-	-	-	-	SXD-32-170	128	30	44593
-	-	-	-	-	-	-	-	-	-	-	-	-	-	-	-	SXD-32-175	128	27	44593

## ACCESSORIES

Reaction Pad	
Extending Reaction Arm	



## BXD HYDRAULIC TORQUE WRENCHES – LOW PROFILE HEXAGON

### TECHNICAL SPECIFICATION:

Torque Capacity up to 48327 Nm

Torque Accuracy of +/- 3 %

Working Pressure 700 bar

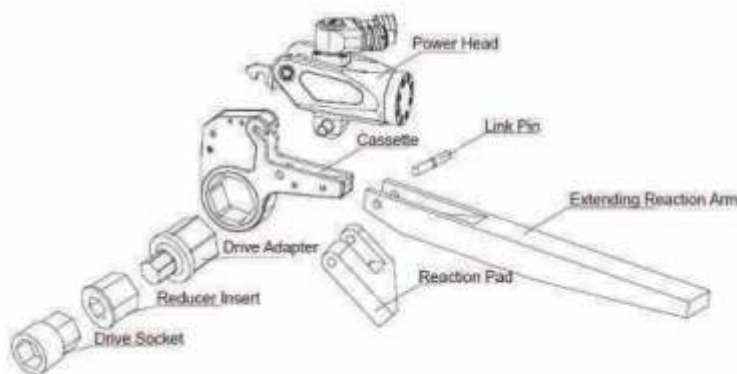


### FEATURES:

- Lightweight
- Output torque capacities from 232 to 44593 Nm
- Low profile design for direct in-line reaction
- Narrow cassette head design makes it ideal for limited access applications
- Ratchet head can be easily changed by simply withdrawing/inserting a single pin
- Imperial ratchet heads available with across flat (AF sizes) sizes from 1 1/16" to 6 7/8"
- Metric ratchet heads available with across flat (AF sizes) sizes from 24 to 175 mm
- Fitted with 360° x 180° swivel with quick release couplings for easy positioning of hydraulic hoses

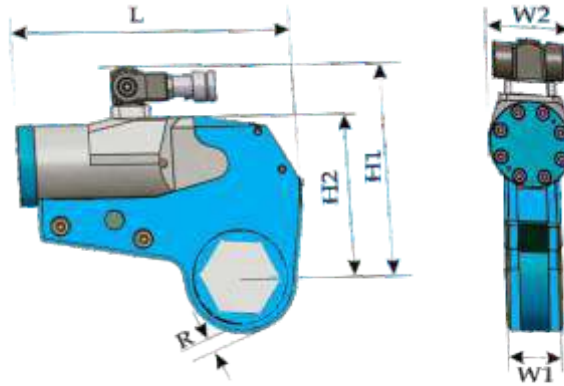
## ACCESSORIES

Reaction Pad	
Extending Reaction Arm	



MODEL NO.	TORQUE NM	NUT SIZES IN MM	POWER HEAD WEIGHT IN KGS	LINK / CASSATTE WEIGHT IN KGS
BXD-2	232-2328	19-55	1	1.6
	241-2414	60	1	1.7
BXD-4	585-2510	34-36	-	-
	585-5021	41	2	4.4
	585-5858	46-65	2	4.6
	647-6474	70-80	-	-
BXD-8	1000-11000	41-95	3.0	8.2
	1120-12100	100-105	3.5	9
BXD-14	1852-18521	50-117	5.5	11.6
BXD-32	4188-41882	110-155	11.4	29
	4459-44593	160-175	11.4	30





Dimension Model No.	L	H1	H2	W1	W1
BXD-2	196.4 196.4	125.9 128.5	102.3 105	32 32	51 51
BXD-4	245 246	177 187	135.7 145.7	42 42	66 66
BXD-8	300 301	207 216	169 178	53 53	83 83
BXD-14	361	239	204	64	99
BXD-32	430 441	303 315	272 285	85 85	131 131

## BXD SERIES HEX / RATCHET LINKS

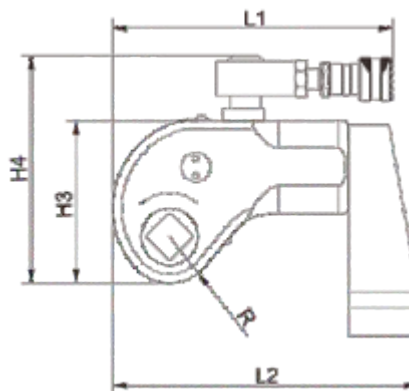
BXD-2				BXD-4				BXD-8				BXD-14				BXD-32			
Type	R	A	Max Torque	Type	R	A	Max Torque	Type	R	A	Max Torque	Type	R	A	Max Torque	Type	R	A	Max Torque
BXD-2-19	27	16	2328	BXD-4-34	36	16	2510	BXD-8-41	46	22	10941	BXD-14-50	60	31	18521	BXD-32-85	78	28	41882
BXD-2-22	27	14	2328	BXD-4-36	36	15	2510	BXD-8-46	46	19	10941	BXD-14-55	60	28	18521	BXD-32-90	78	28	41882
BXD-2-27	27	11	2328	BXD-4-41	39	15	5021	BXD-8-50	46	17	10941	BXD-14-60	60	25	18521	BXD-32-95	83	28	41882
BXD-2-30	29	12	2328	BXD-4-46	42	15	5858	BXD-8-55	50	18	10941	BXD-14-65	60	22	18521	BXD-32-100	83	25	41882
BXD-2-32	29	11	2328	BXD-4-50	44	15	5858	BXD-8-60	52	17	10941	BXD-14-70	60	19	18521	BXD-32-105	89	28	41882
BXD-2-34	31	11	2328	BXD-4-55	46	14	5858	BXD-8-65	55	17	10941	BXD-14-75	63	19	18521	BXD-32-110	89	25	41882
BXD-2-36	31	10	2328	BXD-4-60	50	15	5858	BXD-8-70	58	17	10941	BXD-14-80	66	19	18521	BXD-32-115	95	28	41882
BXD-2-41	34	10	2328	BXD-4-65	53	15	5858	BXD-8-75	60	17	10941	BXD-14-85	69	19	18521	BXD-32-117	95	27	41882
BXD-2-46	37	10	2328	BXD-4-70	56	15	6474	BXD-8-80	63	16	10941	BXD-14-90	72	20	18521	BXD-32-120	95	25	41882
BXD-2-50	40	11	2328	BXD-4-75	59	15	6474	BXD-8-85	66	16	10941	BXD-14-95	74	19	18521	BXD-32-125	101	29	41882
BXD-2-55	43	11	2328	BXD-4-80	61	15	6474	BXD-8-90	69	17	10941	BXD-14-100	77	19	18521	BXD-32-130	101	26	41882
BDX-2-60	46	11	2414	-	-	-	-	BXD-8-95	71	16	10941	BXD-14-105	80	19	18521	BXD-32-135	104	26	41882
-	-	-	-	-	-	-	-	BXD-8-100	75	17	11774	BXD-14-110	83	19	18521	BXD-32-140	110	29	41882
-	-	-	-	-	-	-	-	BXD-8-105	78	17	11774	BXD-14-115	87	20	18521	BXD-32-145	110	26	41882
-	-	-	-	-	-	-	-	-	-	-	-	BXD-14-117	87	19	18521	BXD-32-150	116	29	41882
-	-	-	-	-	-	-	-	-	-	-	-	-	-	-	-	BXD-32-155	116	26	41882
-	-	-	-	-	-	-	-	-	-	-	-	-	-	-	-	BXD-32-160	128	36	44593
-	-	-	-	-	-	-	-	-	-	-	-	-	-	-	-	BXD-32-165	128	33	44593
-	-	-	-	-	-	-	-	-	-	-	-	-	-	-	-	BXD-32-170	128	30	44593
-	-	-	-	-	-	-	-	-	-	-	-	-	-	-	-	BXD-32-175	128	27	44593

# SQUARE DRIVE HYDRAULIC TORQUE WRENCH



**TUBE TOOLS**

Ideal for long-term usage by means of aluminum-titanium design. Besides having calibration service and support SHINGARE is one of the important brands that can accomplish big missions even its small body. Almost every tightening & loosening problems can be accomplished with these series that have a torque capacity up to 48666 Nm. SHINGARE serves a wide range accessory for SSD series. These products which are designed for serving true resolutions, entitled with TUV seal result of an effort with appropriate directes.

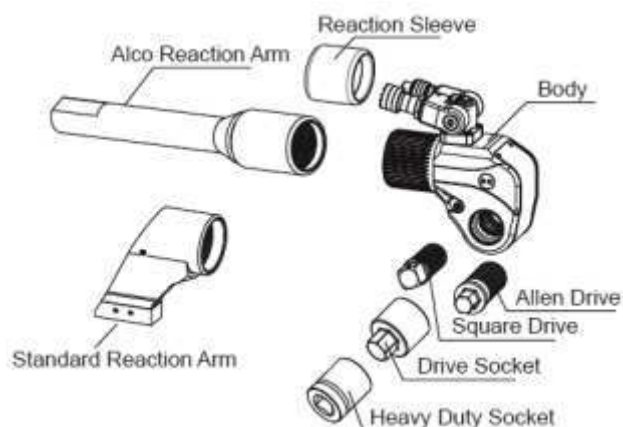


## SELECTION CHART

Model	Torque (N.M)	Bolt Size (M)	Square Drive Inches	Weight (kg)	Size						
					L1	L2	H1	H2	H3	H4	R
SSD-1A	172-1727	16-36	3/4"	2	129	167	51	73	90	131	25
SSD-3A	452-4529	22-48	1"	4.6	167	218	68	98	121	170	34
SSD-8A	1006-10064	30-64	1-1/2"	10	223	293	92	135	163	211	46
SSD-10A	1497-14974	36-72	1-1/2"	14.8	264	323	100	141	177	225	50
SSD-25A	3699-36992	48-100	2-1/2"	32.5	329	432	137	104	240	288	65
SSD-35A	4866-48666	64~120	2-1/2"	50	372.5	496.5	153	216	282	332	243.5

## ACCESSORIES

For Special Reaction Arm, consult to SIPL!

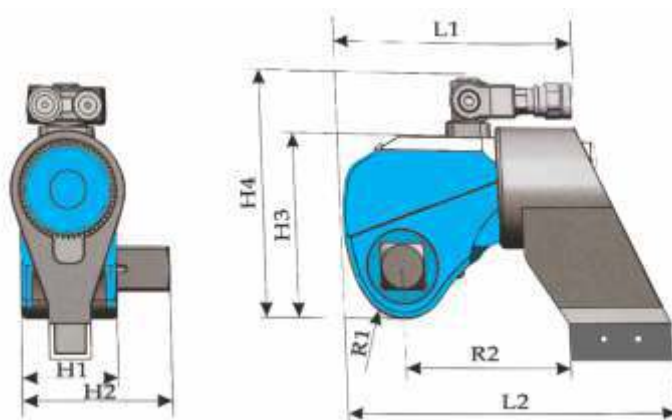


## FEATURES:

- Compact, lightweight aluminium body construction
- Output torque capacities from 183 to 34725 Nm
- Choice of square drive sizes from 3/4" to 2 1/2"
- Reversible square drive for tightening or loosening applications
- Multi-position reaction arm with safety lock feature
- Fitted with 360° uni-swivel quick release couplings for easy positioning
- The 360°×180° degree swivel is free to operation with no space limitation.
- Optional Allen hex drives available from 1/2" to 2 1/4" and 14 to 60 mm
- The new locking coupler ensures the oil keep free access.

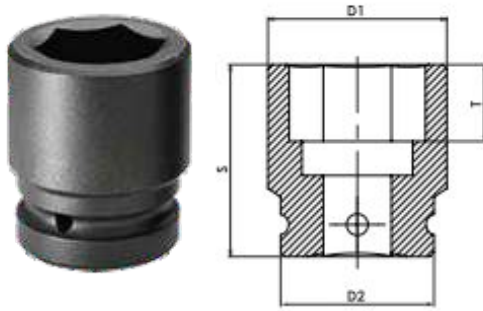


PART	BSD-1	BSD-3	BSD-5	BSD-8	BSD-10	BSD-20	BSD-25
Torque (NM)	183-1837	451-4512	752-7528	1078-10780	1551-15516	2666-26664	3472-34725
Bolt Size A/F of Nut in mm	16-36	22-48	27-56	30-64	36-72	42-90	48-100
Weight (Kg)	2.5	5	10	11	15	26.5	35
Square Drive	3/4"	1"	1-1/2"	1-1/2"	1-1/2"	2-1/2"	2-1/2"

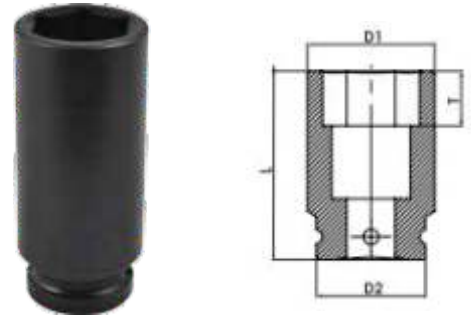


Model No. Dimension	BSD-1	BSD-3	BSD-5	BSD-8	BSD-10	BSD-20	BSD-25	BSD-35
L1	144.5	178	210.5	222	245.5	307.5	323	372.5
L2	173	229	270.5	293	317.5	383.5	401	496.5
H1	50	68	80	90	100	120	137	153
H2	72	95	123	134	142	183	200	216
H3	96	127	149	167	182	220	247	282
H4	131	176.5	199	217	232	270	297	332
R	91.5	123.5	140	165	178	213	228	243.5
R1	26	34	39	47	51	59	66	77
R2	85	114	137	153	154	186	199	214
R3	29	40	46.5	47	58.5	71	72.5	89.5





6 POINTS  
IMPACT SOCKETS



Model No.	Square Drive	Nut A/F		D1	D2	S	T	L
		inch	mm					
S-12M24	3/4"	-	24	40	44	46	21	90
S-12M27	3/4"	-	27	41	44	48	23	90
S-1217	3/4"	1.1/16	-	41	44	48	23	90
S-1230	3/4"	-	30	44	44	52	24	90
S-1220	3/4"	1.1/4	-	49	44	52	24	90
S-12M32	3/4"	-	32	49	44	52	26	90
S-12M36	3/4"	-	36	52	44	55	28	90
S-1223	3/4"	1.7/16	-	52	44	56	28	90
S-12M41	3/4"	-	41	57	44	59	36	90
S-1226	3/4"	1.5/8	-	57	44	59	36	90
S-12M46	3/4"	-	46	67	44	64	37	90
S-1229	3/4"	1.13/16	-	67	44	64	36	90
S-12M50	3/4"	-	50	70	54	67	39	90
S-1232	3/4"	2	-	73	54	67	39	90
12M55DH	3/4"	-	55	78	54	71	41	94
S-1635	3/4"	2.3/16	-	78	54	71	41	94
12M60DH	3/4"	-	60	82	52	75	45	98
S-1638	3/4"	2.3/8	-	82	54	75	45	98
S-12M24	1"	-	24	42	54	55	21	100
S-12M27	1"	-	27	46	54	55	23	100
S-1217	1"	1.1/16	-	46	54	55	23	100
S-12M30	1"	-	30	50	54	57	24	100
S-1220	1"	1.1/4	-	51	54	57	24	100
S-12M32	1"	-	32	51	54	57	26	100
S-12M36	1"	-	36	54	54	60	28	100
S-1223	1"	1.7/16	-	54	54	60	28	100
S-12M41	1"	-	41	63	54	64	36	100
S-1226	1"	1.5/8	-	63	54	64	36	100
S-12M46	1"	-	46	70	54	69	36	100
S-1229	1"	1.13/16	-	70	54	69	36	100
S-1250	1"	-	50	73	54	72	36	100
S-1232	1"	2	-	73	54	72	39	100
12M55DH	1"	-	55	82	54	76	41	105
S-1635	1"	2.3/16	-	82	54	80	41	105
12M60DH	1"	-	60	86	54	82	45	112
S-1638	1"	2.3/8	-	88	54	85	45	112
S-16M65	1"	-	65	92	54	85	46	118
S-1641	1"	2.9/16	-	92	54	85	46	118
S-16M70	1"	-	70	96	54	88	50	124
S-1644	1"	2.3/4	-	96	54	88	50	124
S-16M75	1"	-	75	100	86	92	57	124
S-1647	1"	2.15/16	-	100	86	92	57	124
S-16M100	1"	-	100	135	86	112	62	143
S-1650	1"	3.1/8"	-	105	86	97	57	132
S-16M80	1"	-	80	105	86	97	62	132
S-16M85	1"	-	85	115	86	100	62	132
S-1656	1"	3.1/2"	-	121	86	104	62	140
S-16M90	1"	-	90	127	86	104	62	140
S-16M95	1"	-	95	135	86	106	62	140

Model No.	Square Drive	Nut A/F		D1	D2	S	T	L
		inch	mm					
S-1662	1"	3.7/8"	-	135	86	112	62	143
S-16M36	1.1/2"	-	36	64	86	80	28	130
S-16M41	1.1/2"	-	41	69	86	83	32	130
S-16M46	1.1/2"	-	46	76	86	86	36	130
S-1629	1.1/2"	1.13/16	-	76	86	86	36	130
S-12M50	1.1/2"	-	50	81	86	90	39	130
S-1232	1.1/2"	2	-	81	86	90	39	130
12M55DH	1.1/2"	-	55	88	86	95	41	140
S-1635	1.1/2"	2.3/16	-	88	86	95	41	140
S-16M60	1.1/2"	-	60	96	86	98	45	140
S-1638	1.1/2"	2.3/8	-	96	86	98	45	140
S-16M65	1.1/2"	-	65	102	86	102	46	140
S-1641	1.1/2"	2.9/16	-	102	86	102	46	140
S-16M70	1.1/2"	-	70	108	86	102	50	150
S-1644	1.1/2"	2.3/4	-	108	86	102	50	150
S-16M75	1.1/2"	-	75	116	86	108	57	150
S-1647	1.1/2"	2.15/16	-	116	86	108	57	150
S-16M80	1.1/2"	-	80	120	86	110	62	150
S-1650	1.1/2"	3.1/8	-	120	86	110	62	150
S-16M85	1.1/2"	-	85	130	86	115	62	170
S-16M90	1.1/2"	-	90	135	125	118	65	170
S-1656	1.1/2"	3.1/2	-	135	125	118	65	170
S-16M95	1.1/2"	-	95	140	125	123	70	170
S-16M100	1.1/2"	-	100	148	125	128	75	190
S-1662	1.1/2"	3.7/8	-	148	125	128	75	190
S-16M105	1.1/2"	-	105	155	125	133	80	190
S-1668	1.1/2"	4.1/4	-	155	125	133	80	190
S-16M110	1.1/2"	-	110	161	150	138	85	200
S-16M115	1.1/2"	-	115	161	150	143	94	200
S-1670	1.1/2"	4.5/8	-	175	150	149	94	200
S-16M80	2.1/2"	-	80	135	125	140	62	190
S-1650	2.1/2"	3.1/8	-	135	125	140	62	190
16M85DH	2.1/2"	-	85	140	125	140	62	190
16M90DH	2.1/2"	-	90	145	125	140	65	190
16M95DH	2.1/2"	-	95	155	125	150	70	190
1662DH	2.1/2"	3.7/8	-	155	125	150	70	190
S-24M100	2.1/2"	-	100	160	125	150	75	200
S-24M105	2.1/2"	-	105	165	125	160	80	200
S-24M110	2.1/2"	-	110	174	150	160	85	210
S-24M115	2.1/2"	-	115	180	150	170	90	210
S-2472	2.1/2"	4.1/2	-	180	150	170	90	210
S-2480	2.1/2"	5	-	195	150	175	98	220
S-24M130	2.1/2"	-	130	195	150	175	98	220
S-2482	2.1/2"	5.3/8	-	205	150	180	102	220
S-40M145	2.1/2"	-	145	220	150	180	105	230
S-4092	2.1/2"	5.3/4	-	220	150	180	105	230
S-4098	2.1/2"	6.1/8	-	230	180	190	110	250
S-40104	2.1/2"	6.1/2	-	240	180	200	120	-
S-40110	2.1/2"	6.7/8	-	255	180	200	120	-

## REDUCERS



Wrench Model	Cassette	Nut Size (S)	Locking ring / Reducer		
SXD2				50/36	50/32
	SXD2-46	46	46/36	46/32	46/30
	SXD2-41	41	41/32	41/30	41/27
	SXD2-36	36	36/30	36/27	
	SXD2-32	32	32/27		
	SXD2-30	30			
SXD4	SXD2-27	27			
	SXD4-65	65	65/55	65/50	65/46
	SXD4-60	60	60/50	60/46	60/41
	SXD4-55	55	55/46	55/41	55/36
	SXD4-50	50	50/41	50/36	50/32
	SXD4-46	46	46/36	46/32	46/30
	SXD4-41	41	41/32	41/30	41/27
	SXD4-36	36	36/30	3/27	
	SXD4-32	32	32/27		
SXD8	SXD4-30	30			
	SXD4-27	27			
	SXD8-90	90	90/80	90/75	90/70
	SXD8-85	85	85/75	85/70	85/65
	SXD8-80	80	80/70	80/65	80/60
	SXD8-75	75	75/65	75/60	75/55
	SXD8-70	70	70/60	70/55	70/50
	SXD8-65	65	65/55	65/50	65/45
	SXD8-60	60	60/50	60/46	
SXD14	SXD8-55	55	55/46	55/41	
	SXD8-50	50			
	SXD14-115	115	115/105	115/100	115/95
	SXD14-110	110	110/100	110/95	110/90
	SXD14-105	105	105/95	105/90	105/85
	SXD14-100	100	100/90	100/85	100/80
	SXD14-95	95	95/85	95/80	95/75
	SXD14-90	90	90/80	90/75	90/70
	SXD14-85	85	85/75	85/70	85/65
SXD32	SXD14-80	80	80/70	80/65	
	SXD14-75	75	75/65		
	SXD14-70	70			
	SXD14-65	65			
	SXD32-155	155	155/145	155/130	155/120
	SXD32-145	145	145/130	145/120	145/115
	SXD32-130	130	130/120	130/115	130/110
	SXD32-120	120	120/110	120/105	120/100
	SXD32-115	115	115/105	115/100	115/95
	SXD32-110	110	110/100	110/95	110/90
	SXD32-105	105	105/95	105/90	100/80
	SXD32-100	100	100/90	100/85	100/80
	SXD32-95	95	95/85	95/80	
	SXD32-90	90	90/80		
	SXD32-85	85			
	SXD32-80	80			

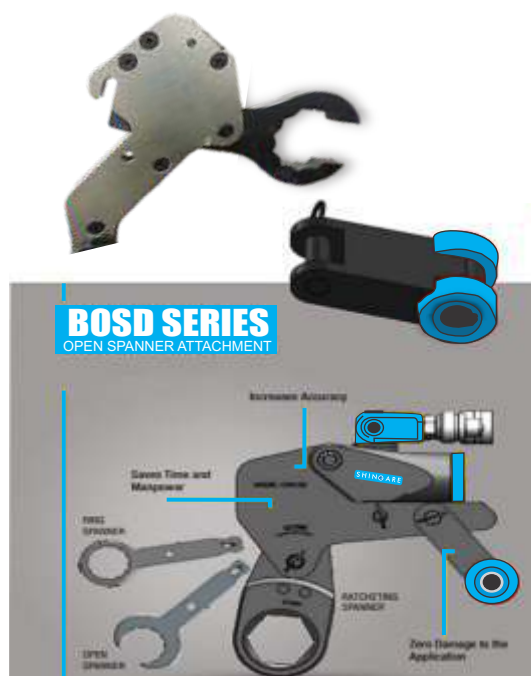
# OPEN SPANNER HYDRAULIC TORQUE WRENCH – BOSD SERIES

Open Spanner series is the professional special type hydraulic torque wrench which 'SHINGARE' vigorously extends in international market. Compare with the conventional cassette type hydraulic torque wrench, this series works directly on the nuts, fixed in cramped space and almost inaccessible area and its body suits well in the narrow space. Open Spanner series covers the nuts from S36 to S135 & Suitable for BOP, Christmas Tree, Well-Head Equipment, Valve Manifold, Limited Clearance Area.

## OPEN SPANNER ATTACHMENT

ROLLER TYPE SPECIAL TOOL DESIGN FOR APPLICATIONS.

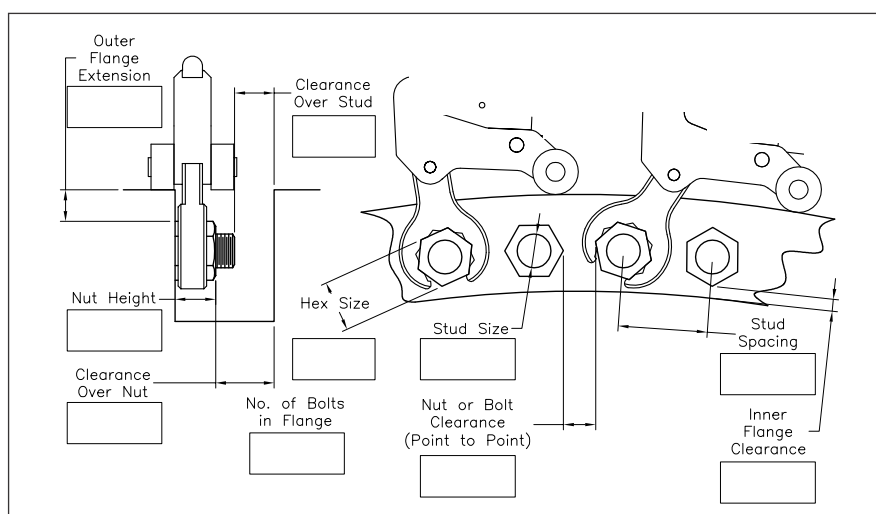
## NEW ARRIVAL



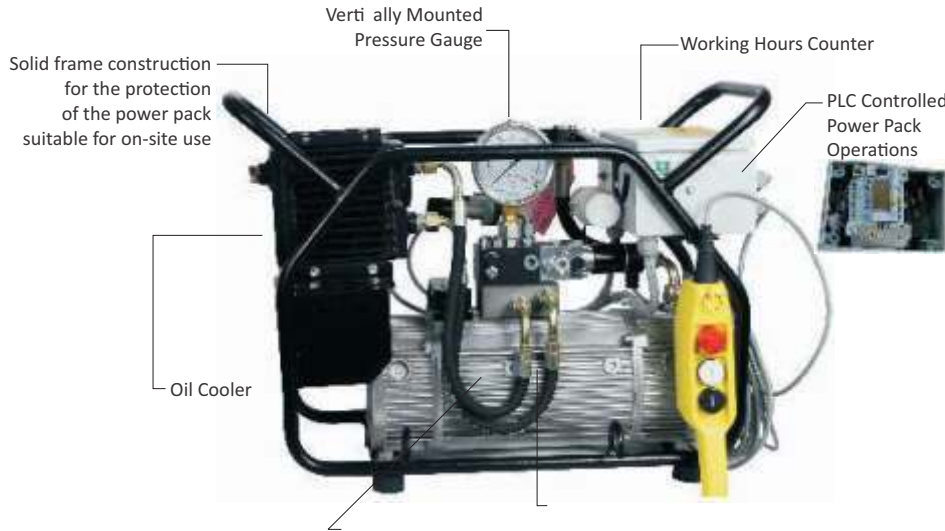
## SPECIFICATION

Torque Range:	241 – 41800 Nm
Available Spanner Size:	A/F -55 – 85 mm A/F - 1 7/16 – 5 3/8 inch

## SPANNER WRENCH DIMENSION



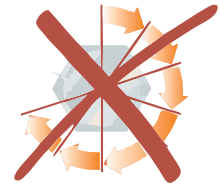




With auto cycle



Without auto cycle



**Note:** Pump will be supplied with Remote control Pendant

## TECHNICAL SPECIFICATION:

Model No.	: SHPE1000
Power Rating	: 1.5 SP
Maximum Pressure	: 800 Bar
Flow Rate	: 9.7LPM@100Bar 0.97LPM@800Bar
Capacity	: 8Lt.

## ADVANTAGES OF FULLY AUTOMATIC POWER PACKS

### 1. FULLY AUTOMATIC POWER PACK

- Faster and reliable in operations
- High repeatability of the bolting process without pressing the button again and again.

### 2. TEMPERATURE MANAGEMENT

- The built heat exchanger to cool the system
- The unique concept of the high-speed cooling and heat exchanger optimizes cooling for continuous operation.
- Powerpack switches off automatically if temperature rises above 800 C.

### 3. OIL IMMERSED MOTOR

- Noiseless and vibration free operations
- Effective temperature equalization cooling motor, Pump & Oil at the same time

### 4. PLC CONTROLLED SYSTEM

- Effectively controlled operations of power packs
- If the power pack operates continuously more than 3 minutes idle, it gets switched off automatically.

## HIGH PRESSURE HOSE

- High quality hydraulic torque wrench bonded twin hose sets
- Maximum working pressure of 700 bar with 4:1 safety factor
- Ergonomically designed protective, strain reliever hand grips on both ends



## TECHNICAL SPECIFICATION :

Working Pressure 700 bar

High Flow 3 – stage pump unit

Compact and Lightweight

## FEATURES

- The Single valve block can be replaced by component FP-4, thereby allowing 2 or 4 tools to be driven simultaneously
- Three stage with air drive
- Supporting continuous operation with steel frame
- 100mm diameter gauge ,aluminium oil tank with oil level indicator
- Variable pressure adjustment between 1000~10000 psi
- Designed for continuous operation
- Supplied with 5 mtr twin hoses and quick connect couplings suitable for SXD and SSD torque wrenches



## SELECTION CHART

TYPE	SHPA-2	SHPA-4
Working Pressure	70 MPa	70 MPa
Drive	Air	Air
Air Pressure	≥3.4 m³/min	≥3.4 m³/min
Power	4.0HP	4.0HP
Tank Capacity	5.5L	5.5L
Flow Rate	10-2-21.1 L/min	10-2-21.1 L/min
Oil Cooler	Yes	Yes
Weight	19kg	21kg
Pill Outputs	4x1/4"NPT	8x1/4"NPT
Air in	4~8 bar	4~8 bar
LxWxH(mm)	442x282x377	460x282x377

**BHARTIYA**

TUBE TOOLS

# HYDRUALIC BOLT TENSIONER



**SHINARE™**  
INDUSTRIES PVT LTD



## FEATURES :

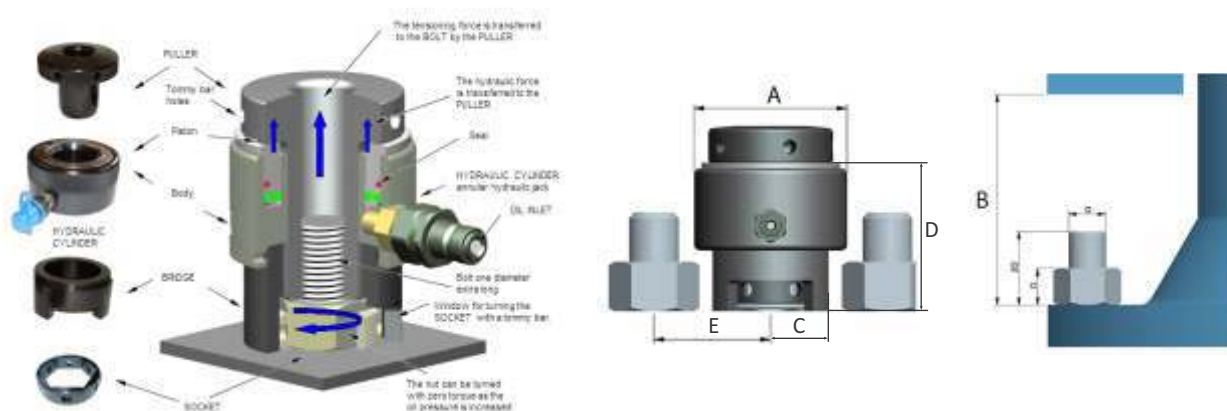
- Shingare hydraulic bolt tensioners have eight load cells from M16 to M150 or from 5/8" to 5 3/4"
- Twin ports for quick connection of multiple tools.
- Only one size of bridge per size of load cell.
- Detachable and rotational bridge simplifies bolt tensioner positioning.
- Full bridge window.
- Black surface treatment protects against corrosion
- Anti-slip grip for more secure handling
- Universal and multi-use tool.
- Double Straight Reaction Arm
- Blank Reaction Arm



## Why Tensioning ?

Safe, reliable and repeatable, the use of hydraulic tensioners has many advantages over other less accurate tightening methods.

- Tension is applied directly to stretch the bolt, so we don't need to fight against friction or losses.
- The applied load is controlled very accurately, because it is directly proportional to the pressure applied to the tensioner.
- The load transfer factor is calculable, helping to give the correct residual load.
- Operation of cooling and improved accuracy reduces time required to re-tension the load.
- Tensioning allows for loading multiple fasteners in a joint at the same time.
- Uniform bolt loading ensures a high level of accuracy by applying a constant force.
- Purely axial, tensile loading ensures no torsional stresses are introduced.



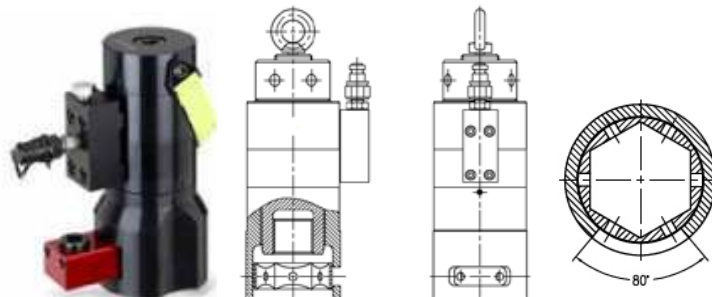
Model	Bolt Size		Cylinder	Area	Dimension					Weight
	Metric	Inch			A	B	C	D	E	
SBT-3	M16	-	23.5	15.7	75	168	32.5	90	47-51	2
	M18	3/4"								
	M20	-								
	M22	7/8"								
	M24	1								
SBT-5	M27	1-1/8"	50	33	102	187	47	106	65-71	4
	M30	-								
	M33	1-1/4"								
	M36	1-3/8"								
	M39	1-1/2"								
SBT-9	M39	1-1/2"	90	59.7	133	208	61	120	86-93	6
	M42	1-5/8"								
	M45	1-3/4"								
	M48	1-7/8"								
SBT-13	M52	2"	130	83	163	231	73	135	106-114	10
	M56	2-1/4"								
	M60	-								
	M64	2-1/2"								
SBT-19	M64	2-1/2"	190	123	193	254	86.5	150	129-135	15
	M68	-								
	M72	2-3/4"								
	M76	3"								
SBT-27	M76	3"	270	176	233	286	110	180	155-167	24
	M80	-								
	M85	3-1/4"								
	M90	3-1/2"								
	M95	3-3/4"								
SBT-44	M110	4-1/2"	440	251	280	304-338	111-121	181-197	210-233	45
	M120	4-3/4"								
	M125	5"								
SBT-54	M130	5-1/4"	540	317	325	354-388	126-141	202-216	243-275	73
	M140	5-1/2"								
	M150	5-3/4"								

# SBTE SERIES MULTI-STAGE BOLT TENSIONER



## FEATURES AND BENEFITS

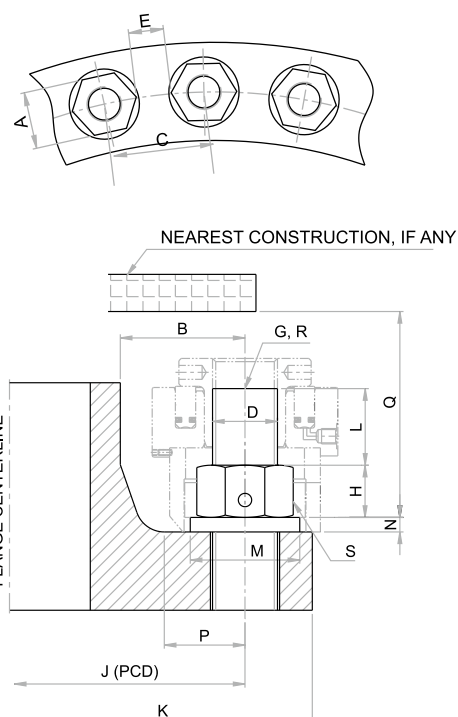
Multi-stage Cylinder Design, Increase the Tension Length.  
Strong capacity with small outside diameter,  
it is suit for the operation t narrow space.



## SELECTION CHART

Model	SBTE-30	SBTE-36	SBTE-39	SBTE-42	SBTE-48
Maximum Operation Pressure	1350bar	11350bar	1350bar	1350bar	1250bar
Maximum Output Capacity	465KN	678KN	915KN	915KN	1202KN
Maximum Stroke	7mm	10mm	10mm	10mm	10mm
Cylinder Effecte Area	3448mm <sup>2</sup>	5027mm <sup>2</sup>	6830mm <sup>2</sup>	6830mm <sup>2</sup>	9621mm <sup>2</sup>
Quantity of Cylinder Step	2	2	2	2	2
Outside Diameter	72mm	84.5mm	98.5mm	98.5mm	129mm
Bolt Size	M30×3.5	M36×4	M39×4	M42×4.5	M42×4.5

Description	Metric (mm)	Imperial (inches)
A - Nut Across Flat		
B - Back Wall Distance from Stud / Bolt Center		
C - Center to Center Distance of Stud / Bolt		
D - Diameter of Stud / Bolt		
E - Nut to Nut Edge Distance		
G - Residual Stud / Bolt load		
H - Height of Nut		
J - Pitch Circle Diameter		
K - Flange outside Diameter		
L - Protruded Thread Length of Stud / Bolt		
M - Washer outside Diameter		
N - Washer Thickness		
P - Distance		
Q - Distance if applicable		
R - Number of Studs		
S - Hex Nut or Round Nut, if Round Nut - mention OD		



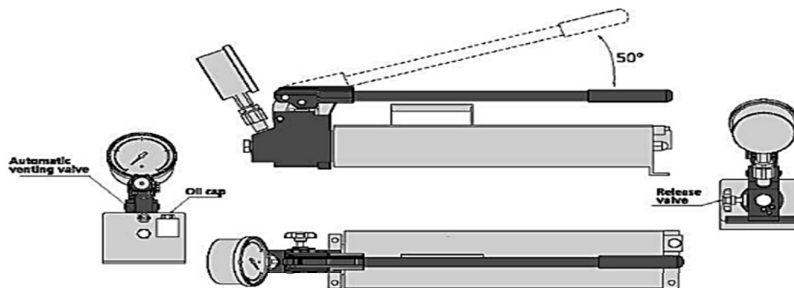
## SHP MANUAL PUMPS

Manual Pumps with twin stage cylinders, for both single and double acting jacking cylinders and an automatic spill free venting valve to increase pumping efficiency on non Marine specification models.



## MATERIAL

Cast and Drawn Aluminium Body.  
Thermoplastic Hose with Spial Steel Reinforcement.  
ISO14540 Steel Couplings.  
Pressure Gauge 180 Mpa with Protecti e cover.



## SERIES SHP MANUL PUMPS

### Category

Hand Pump

### Description Class

Twin stage, 180 Mpa

### Max working pressure

180.0 Mpa

### Pressure Gauges

Gauge included

### Tank Volume (l)

2.2

### Description

Marine engine maintenance specificaation, for use with single acting cylind s.



## ELECTRIC DRIVEN TENSIONER PUMP (SETP)



### FEATURES OF POWER PACK:

- Brand new technology: Combine unit of Low pressure and high pressure equipments.
- Less High pressure component used, hence maintenance cost is less.
- All components are Highly precise and reputed make.
- Substantial savings in energy and oil consumption.
- Analog or Digital pressure gauges assure the highest possible read out and adjustment precision.
- High speed/flow.
- Remotely operation forward and reverse.
- Light weight & compact design.

### OPTIONAL ACCESSORIES:

- High pressure hose
- High pressure QRC (Quick Release Coupling)
- Digital Pressure Gauge

## SELECTION CHART

Tensioning Pump - Model SETP-1500 (Tensioning Pump)		
Pump		
Main Voltage	AC	230 V, 50Hz
Solenoid Voltage	AC	230 V
Main Consumption	A	10
Motor Capacity	kW	1.5
Protected According to	IP	IP 55
Nominal Pressure	bar	0-1500
Flow		
Flow @ 1500 Bar	lpm	0.1 @ 1500 bar
Tank Volume	litre	14
Oil Type		Servo 68
Ambient Temperature	C	45°
Max Oil Temperature	C	60°
Weight		
Weight without oil	Kg	35 Approx



The air operated powerpack for bolt tensioner SATP-1500 are designed to meet the highest technical and safety requirements of high pressure equipment.

## TECHNICAL FEATURES

- **Stainless Steel Frame:** The hydraulic unit is installed in a weather proof stainless steel protection fame.
- **Logical Control Panel:** Logical layout design engraved for easy operation.
- **Calibrated Pressure Gauge:** Calibrated 150mm (6"), liquid filled, SS Frame, 2500 bar rating pessure gauge with dual reading of bar & psi.
- **Complete Air System:** System includes FRL Unit, air pressure gauge and control knob for safe air control and supply.
- **Higher Operating Pessure:** Pump has max working pressure of 1500 bar to cover all bolt tensioning applicaations.
- **Light Weight:** Unit weighs only 18 Kg and measures 450mm x 340mm x 480mm.
- **Lower Input air Pressure:** Higher pressure ratio of 1 : 350 ensues less input air pressure for operaation.
- **Quick Connect Outlet:** Pump comes fitted with quick connect outlet for easy cconnection of hydraulic hose.

## OPTIONAL ACCESSORIES:

- High pressure hose
- High pressure QRC (Quick Release Coupling)
- Digital Pressure Gauge

## SELECTION CHART

Technical Details - Model SATP-1500 (Bharti a Air Operated Tensioner Pump)		
Pump		
Pressure Ratio		1:350
Displacement Volume	cm <sup>3</sup>	1.3
Operating Pessure, Max. ( at 5.1 bar Pre Limited (PL) Air Pressure )	bar	1800
Compressed air supply (air drive)		
System Operating Air Pessure, Max.	bar	5.1
Safety Valve Set Pressure	bar	5.5
Stainless Steel Tank Capacity		
Oil Tank capacity	litre	5

**BHARTIYA**

TUBE TOOLS



**SHINOARE**  
INDUSTRIES PVT LTD

- Infinitely variable output pressure and fluid displacement speed
- Integral inlet air filtration and lubrication unit with air pressure gauge
- Airline regulator for easy setting of input air and output hydraulic pressure
- Maximum air consumption of 0.79 m<sup>3</sup> (28 scfm) per minute at 7 bars
- Smooth and easily operated hydraulic pressure hold and release valve
- Fitted with input air pump start/stop valve for easy and fast pressure shut off
- Robust stainless-steel protective framework
- Lightweight plastic, 7.5 litres capacity, fluid reservoir
- Optional stainless-steel reservoir, stroke counter system and pressure isolation valve available on request
- No Airline Lubricator required
- Wide range of models with different ratios
- Easy to install, operate and maintain
- Heat, Flame, spark and Explosion proof
- Automatic Pressure holding.

## SELECTION CHART

Model	Pressure Ratio	Inlet Air Pressure	MAX Outlet Pressure(bar)*	Air Inlet Port	Outlet Port	Max Flow (L/min)**
SHP/32	4:1	3-8 bar	32	G 1/2	NPT	70.0
SHP/48	6:1	3-8 bar	48	G 1/2	NPT	29.91
SHP/80	10:1	3-8 bar	80	G 1/2	NPT	18.84
SHP/128	16:1	3-8 bar	128	G 1/2	NPT	12.42
SHP/224	28:1	3-8 bar	224	G 1/2	NPT	7.11
SHP/320	40:1	3-8 bar	320	G 1/2	NPT	4.89
SHP/512	64:1	3-8 bar	512	G 1/2	NPT	3.08
SHP/640	80:1	3-8 bar	640	G 1/2	NPT	2.44
SHP/800	100:1	3-8 bar	800	G 1/2	NPT	1.92
SHP/1040	130:1	3-8 bar	1040	G 1/2	NPT	1.47
SHP/1400	175:1	3-8 bar	1400	G 1/2	NPT	1.14
SHP/2040	255:1	3-8 bar	2040	G 1/2	NPT	0.75
SHP/3200	400:1	3-8 bar	3200	G 1/2	NPT	0.48
SHP/4080	510:1	3-8 bar	4080	G 1/2	NPT	0.65
SHP/6400	800:1	3-8 bar	6400	G 1/2	NPT	0.42



## CHARACTERISTIC FEATURES:

- Easy to operate
- Light weight Compact construction
- Stationary/ portable
- Pneumatic drive
- No heat, flame or spark risk

## SPECIFICATION:

SHINGARE Air operated power packs are compact and robust self-contained unit designed to meet the needs of today's industry where reliable sources of hydraulic power are required.

Each SHP/3200 Power pack contains the pump complete with air filter, regulator, air gauge, on/off valve, hydraulic pressure gauge (4000 Dial, 100 mm dial), outlet pressure connection block, release valve and interconnecting pipework. The equipment is mounted inside a robust Stainless steel framework together with fluid tank having filler breather and strainer. Each unit is factory pressure tested prior to dispatch.

## OPTIONAL ACCESSORIES:

- High Pressure Hose
- High pressure Quick release coupling
- Remote operation Pneumatic/Electric
- Digital Data logger
- Mechanical Chart recorder



## TECHNICAL DATA:

MODEL NO.	SHP/3200
Pressure Ratio	1:370 bar
Outlet Pressure Max.	3200 bar @ 9 bar Air driven pr.
Utilities	OIL
Flow Max	Depending on Application
Connection Inlet	DRIVE AIR – 1/2" SHP
Connection Outlet	M16X1.5
Air Drive Pressure	Min. 1bar - Max. 10 bar
Dimension	Approx.450(L)X340(D)x450(H)
Weight	Approx.30 kg without Oil
Displacement Volume	3.8 cm

- Pressure Testing
- Hydraulic Testing
- Liquefied Gas Transfer
- Precision Lubrication and Spraying
- Roller Tensioning
- Metering
- Work Holding / Power Clamping



## CIRCULAR CHART RECORDER (P-T)

### FEATURES:

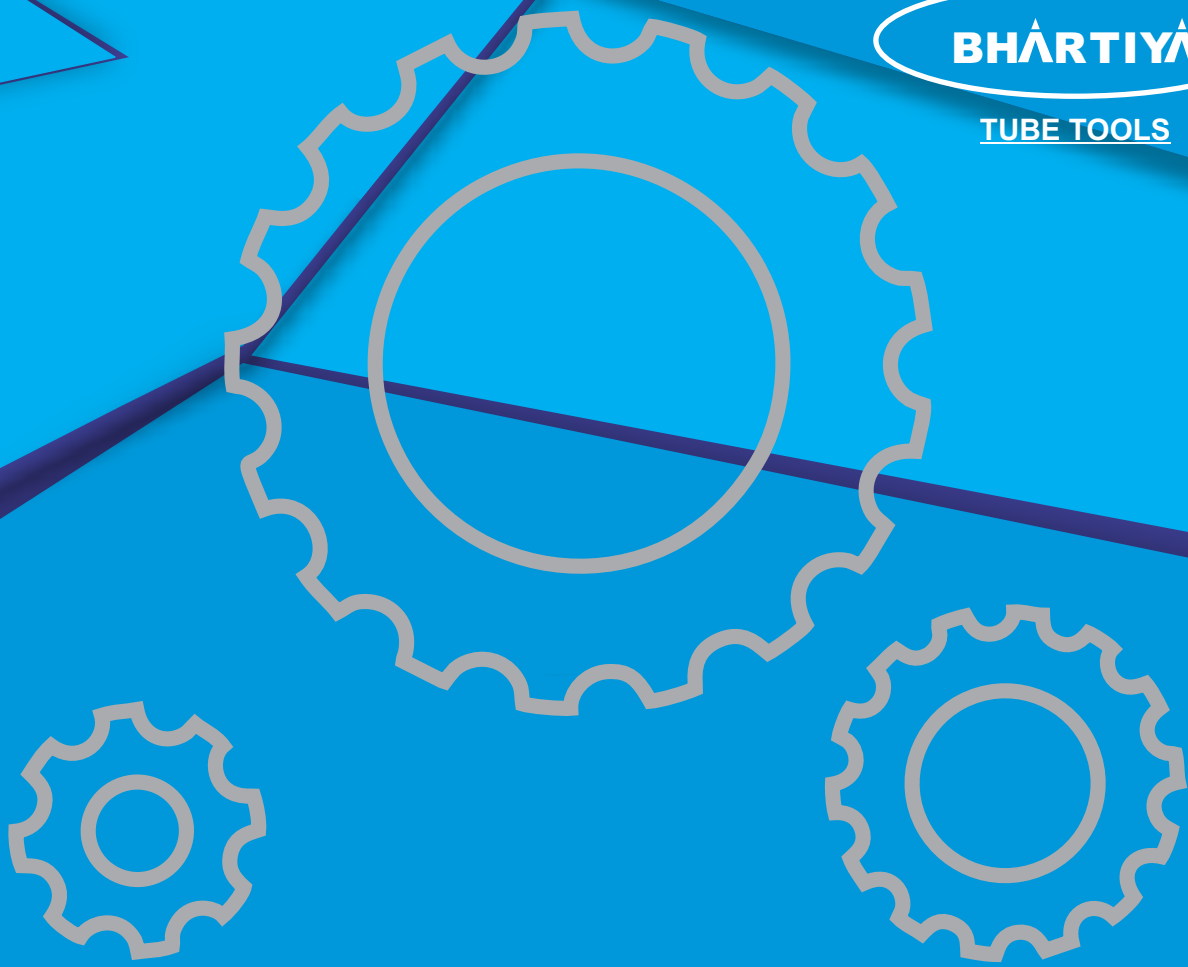
- Mercury Free or Mercury Filled Temperature Systems Available
- All – Welded construction prevents deterioration
- Carefully heat-treated coil provides superior spring action.
- Durable, low maintenance design: thermal system and other parts easily replaced by field technician
- 300 Series stainless steel bulb, interconnection capillary, and armour available on certain designs
- Standard case compensated system for uncompensated capillary lengths not exceeding 25'
- ALL 316 Stainless Steel Pressure Elements.

Weatherproof construction; heavy die cast aluminium case with white powder coat finish; heavy lockable door with weather stripping; available with or without window; ruggedly built for outdoor use and to withstand high levels of vibration; ½" diameter screened air vent holes; adjustable drawer pull latch with available Safety lock; all stainless steel corrosion resistant internals; felt tippens; micro-adjustable wire linkage; 8" and 12" circular chart sizes; one, two, or three felt tippens option for a combination of both pressure and temperature.



**BHARTIYA**

TUBE TOOLS



# PNEUMATIC TORQUE WRENCH



**SHINGARE**  
INDUSTRIES PVT LTD

# OPERATING INSTRUCTIONS

**IMPORTANT: DO NOT OPERATE THE TOOL BEFORE READING THESE INSTRUCTIONS, IF BREAKDOWN, MALFUNCTION OR DAMAGE OCCURS, DO NOT ATTEMPT TO REPAIR, PLEASE CONTACT US IMMEDIATELY.**

## 1/2" NPT INLET

Install your air supply to the 1/2" NPT female part in the regulator. A minimum 1/2" air line must be used capable of 100 psi at 50 cfm.



## 1/2" NPT INLET

Install the supplied airline to the 1/2" NPT outlet part on the automatic oiler. The quick connect fitting at the opposite end of the hose will be attached to tool.

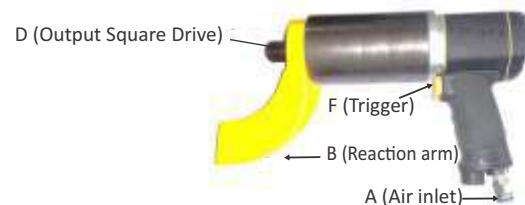
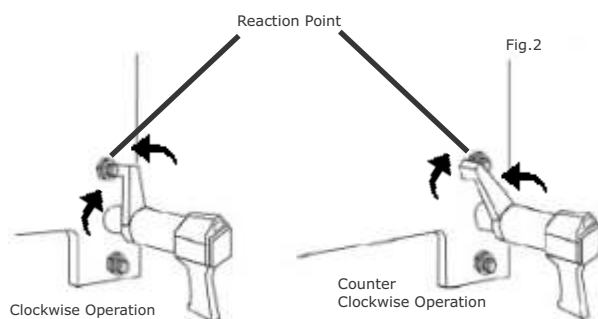
## AUTOMATIC OILER

Fill the automatic oiler with air tool oil only. Fill from the top or by removing and filling the bowl, then reinstalling from the bottom.

**NOTE: Air supply must be a minimum of 90 psi @ 50 cfm**

Pneumatic torque Wrenches are reversible, non-impact, torque controlled tightening tools and must always be operated with the following:

- Clean dry air supply with a minimum flow of 100psi and 30cfm and 1/2" air line
- Cage Assembly with lubricator and regulator
- Impact Sockets
- Proper Reaction Arm
- To increase air pressure (and torque) turn the "T" handle (Air Pressure Regulator) clockwise
- Always set air pressure with tool running.



C (Splines or serpentine)



E (Forward & Reverse switch)



**Note: Tool must always be running when setting air pr.**



# PNEUMATIC TORQUE WRENCH

## OPERATING THE WRENCH

- Fit the wrench with the correct size impact socket to suit the bolt to be tightened.
- Check that the Forward/Reverse switch is set correctly.
- Rotate the handle to a convenient position relative to the Reaction Arm.
- Fit the tool onto the bolt to be tightened with the Reaction Arm adjacent to the reaction point.
- Squeeze the Trigger (F) partially to bring the Reaction Arm into contact with the reaction point.
- When the tool is in operation the Reaction Arm rotates in the opposite direction to the Output Square Drive and must be allowed to rest squarely against a solid object or surface adjacent to the bolt to be tightened.
- Trigger keeps fully depressed until wrench stalls. If the Trigger is released before the wrench stalls, full torque will not be applied to the bolt.
- Release Trigger and remove the tool from bolt.

## ASSEMBLY

- Blow out hoses before connecting.
- Connect the wrench Air Inlet- to the outlet side of the cage Assembly, observing airflow direction.
- Connect air supply to inlet side of the cage Assembly using a minimum hose size of 1/2"
- Check oil level in lubricator and fill to correct level.
- Attach Reaction Arm (B) to Spline or Serpentine (C) adjacent to the Output Drive (D) of the wrench and secure with circlip.

## SAFETY

- ALWAYS wear safety goggles when the tool is in operation.
- Make sure the reaction arm is in contact with a solid contact point before you operate the tool.
- Keep your body Parts clear of the reaction arm and the contact point.
- Set your air pressure while the tool is running.
- Refer to the enclosed torque chart to set the correct air pressure regulator setting for a required torque
- NEVER exceed the maximum air pressure shown on the torque chart.

## SELECTION CHART

Model No.	Min. Torque		Max. Torque		Free Speed rpm	Square Drive inch	Weight	
	Ft /Lbs	Nm	Ft /Lbs	Nm			Kg.	Lbs
SPTW-13	30	45	130	180	42	1/2" / 3/4"	6.0	13.2
SPTW-50	125	170	500	680	25	1/2" / 3/4"	7.0	15.5
SPTW-75	185	250	750	1020	15	3/4" / 1"	7.0	15.5
SPTW-100	250	340	1040	1400	9	3/4" / 1"	7.0	15.5
SPTW-220	560	750	2200	3000	6	1" / 1.1/2"	10.0	22
SPTW-300	750	1010	3000	4050	3	1" / 1.1/2"	11.0	24.3
SPTW-400	1000	1350	4000	5400	2.5	1.1 / 2"	13.60	30
SPTW-480	1200	1650	4800	6500	2	1.1 / 2"	13.60	30
SPTW-600	1630	2200	6000	8100	1.5	1.1 / 2"	13.60	30

**BHARTIYA**

TUBE TOOLS

# ELECTRIC TORQUE WRENCH



**SHINARE™**  
INDUSTRIES PVT LTD

EWS Electric torque wrench is designed to install heavy hex structural bolts. It has square drive end so that same machine can be used for different hexagon nut by using suitable socket. It shuts off when the torque requirements is reached. The tools offers a non-reactive torque controlled option for hex bolt installation. This series of wrenches adopts German motors. Strong power, Durable and Stable performance are its famous features.

These tools are used for a variety of different tasks across many industries – including home repairs and maintenance, automotive and construction. It's important to always use this tool in applications where screws and bolts must be secure and tight. These tools allow the user to measure the amount of pressure being applied to fasteners, to ensure it matches the



## FEATURES:

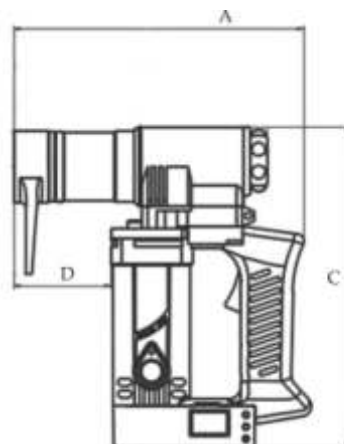
- Easy switch directions Applying reaction arm to closet object, Tighten up to target torque.
- Perfect solution for your work at narrow space.
- Ultra compact socket with an integrated reaction arm.
- Easily set your target torque with dial on the Controller.
- Versatile performance of our electric torque wrench for bridge construction, steel fabrication and any kind of heavy industry.
- Available with both direction forward and reverse.
- Shortest profile and compact socket make accessible to bolts at any narrow space.

Model No.	Torque (Nm)	Square Drive	Weight (Kg)	Speed (Rpm)
EWS-3	100-300	3/4"	4	28
EWS-5	200-500	3/4"	4.2	20
EWS-7	300-700	1"	4.6	18
EWS-9	400-900	1"	5.1	16
EWS-12	500-1200	1"	6.3	14
EWS-21	1000-2100	1.1/2"	7.2	5.5
EWS-25	1100-2500	1.1/2"	9	5
EWS-35	1700-3500	1.1/2"	15	4.5
EWS-60	3000-6000	1.1/2"	18	2.5
EWS-100	5000-10000	2.1/2"	21	2.5

## EWH SERIES

Electric torque wrench is designed to install heavy hex structural bolts, non-impact, electricity. It has square drive end so that same machine can be used for different hexagon nut by using suitable socket. It shuts off when the torque requirements is reached. The tools offers a non-reactive torque controlled option for hex bolt installation. This series of wrenches adopts German motors. Strong power, Durable and Stable performance are its famous features.

These tools are used for a variety of different tasks across many industries – including home repairs and maintenance, automotive and construction. It's important to always use this tool in applications where screws and bolts must be secure and tight. These tools allow the user to measure the amount of pressure being applied to fasteners, to ensure it







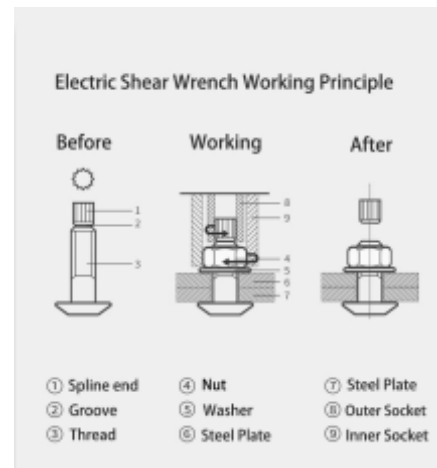
## FEATURES:

- Available with both direction forward and reverse.
- Shortest profile and compact socket make accessible to bolts at any narrow space.
- Easy switch directions Applying reaction arm to closet object, Tighten up to target torque.
- Perfect solution for your work at narrow space.
- Easily set your target torque with dial on the Controller.
- Versatile performance of our electric torque wrench for bridge construction, steel fabrication and any kind of heavy industry.
- Ultra compact socket with an integrated reaction arm.

## SELECTION CHART

Model No.	Torque (Nm)	Speed (Rpm)	Weight (Kg)	Direct Hex Available	Diameter D	Overwall Length A (mm)	Overwall Width C (mm)
EWB-3	100-300	28	4	M10,M12,M16	80	240	267
EWB-5	200-500	20	4.2	M12,M16,M20	111	271	267
EWB-7	300-700	18	4.6	M16,M20,M22	54	221	269
EWB-9	400-900	16	5.1	M20,M22,M24	71	238	275
EWB-12	500-1200	14	6.3	M22,M24,M27	50	225	287
EWB-21	1000-2100	10	7.2	M27,M30,M33	95	274	286
EWB-25	1100-2500	5	9	M30,M33,M36	107	283	293
EWB-35	1700-3500	4.5	15	M33,M36,M42	107	283	293

To Install TC Bolts, you need a ESL series shear wrenches. This is an electric wrench with counter-rotating sockets. The proper gun for each diameter bolt should be determined. TC bolts are structural bolts used for steel structure construction. Therefore, these bolts are created to provide the highest... Moreover, though its fastening mechanism is complicated, TC bolts are easy to use and can be installed by just one person. The inbuilt functionalities of these bolts allow for determining the tensioning required to hold together a structure. With the help of this functionality, users can also figure out whether the required tension has been achieved, regardless of how much torque was applied to achieve the tension.



## FEATURES:

- All Shear Wrenches are calibrated and certified on in-house test bench in our facility.
- Hence, this wrench is very suitable for various complex construction environments.
- Bhartiya ESL-Series light weight and compact shear wrenches provide consistent, reliable torque tightening and shearing to the tension control bolts.
- Bhartiya Electric Shear Wrenches are capable of achieving controllable torque range of 5000 Nm with supported bolt sizes till M36.
- Compared with general shear wrench, Electric Shear Wrench biggest feature is that the working head can rotate 360 degrees horizontally relative to the position of the handle.

## SELECTION CHART

Model No.	Torque (Nm)	Bolt Size (Nm)	Weight (Kg)	Speed (Rpm)
ESL-16	320	M12,M16	3.8	36
ESL-2	540	M12,M16,M20	6	24
ESL-22	910	M16,M20,M22	6.8	20
ESL-24	1200	M20,M22,M24	8	14
ESL-27	1700	M22,M24,M27	8.3	12
ESL-30	2500	M24,M27,M30	10.5	5
ESL-33	3500	M27,M30,M33	15	4.5
ESL-36	5000	M30,M33,M36	17	2.5

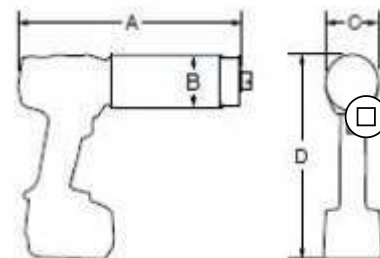
# SBTCK SERIES-BATTERY TORQUE WRENCH



**TUBE TOOLS**

## FEATURES :

- Digital display
- Adjustable torque from 1N.m to 4000N.m
- Accuracy +/- 5% of reading
- Repeated Accuracy:  $\pm 2\%$



## SELECTION CHART

Model No.	SQ Drive	Torque (Nm)		Speed RPM	Weight (Kg)	Size A (mm)	Size B (mm)	Size C (mm)	Size D (mm)
		Min	Max						
SBT07CX	3/4"	230	700	13	3.5	231	63	67	262
SBT07-2CX	3/4"	230	700	21.5	4.3	279	63	67	262
SBT14CX	3/4"	300	1400	10.5	3.5	231	63	67	262
SBT20CX	1"	400	2000	6	4.0	244	63	69	262
SBT40CX	1"	800	4000	3	6.0	285	69	81	266
SBT70CX	1.5"	1350	7000	1.6	8.8	295	95	95	272

## APPLICATION:



Bolt Size	A/F	Bolt Grade: 8.8				Bolt Grade: 10.9				Bolt Grade: 12.9				Bolt Size	A/F	Bolt Grade: B7/B16			
		Torque Values (Nm)			Tension (kN)	Torque Values (Nm)			Tension (kN)	Torque Values (Nm)			Tension (kN)			Torque Values (Nm)			Tension (kN)
		μ=0.10	μ=0.15	μ=0.2		μ=0.10	μ=0.15	μ=0.2		μ=0.10	μ=0.15	μ=0.2				μ=0.10	μ=0.15	μ=0.2	
M16	24	121	165	208	54	171	232	292	76	205	278	351	91	5/8"	1.1/16"	126	171	215	57
M18	27	165	224	283	66	233	316	399	92	279	379	478	111						
M20	30	237	322	406	85	333	452	571	119	400	543	685	143	3/4"	1.1/4"	226	306	387	85
M22	32	327	443	560	106	459	623	787	149	551	748	945	179	7/8"	1.7/16"	366	496	627	117
M24	36	409	556	702	122	576	781	987	171	691	938	1184	206	1"	1.5/8"	549	745	941	154
M27	41	608	828	1043	161	855	1161	1467	226	1027	1393	1760	272						
M30	46	820	1113	1406	195	1154	1566	1978	275	1384	1879	2373	330	1.1/8"	1.13/6"	816	1107	1398	204
M33	50	1128	1531	1933	244	1586	2152	2719	343	1903	2583	3263	412	1.1/4"	2"	1157	1570	1983	260
M36	55	1442	1957	2472	286	2028	2752	3476	402	2433	3302	4171	483	1.3/8"	2.3/16"	1582	2147	2712	324
M39	60	1881	2553	3225	345	2646	3590	4535	485	3175	4308	5442	581	1.1/2"	2.3/8"	2100	2850	3600	394
M42	65	2317	3145	2973	394	3259	4423	5587	554	3911	5307	6704	665	1.5/8"	2.9/16"	2720	3692	4663	471
M45	70	2912	3952	4992	462	4095	5558	7021	650	4914	6670	8425	780	1.3/4"	2.3/4"	3452	4685	5917	555
M48	75	3490	4737	5984	519	4909	6662	8415	730	5890	7994	10097	877	1.7/8"	2.15/16"	4304	5841	7378	645
M52	80	4545	6169	7792	624	6392	8675	10958	878	7670	10410	13149	1054	2"	3.1/8"	5285	7173	9060	743
M56	85	5642	7658	9673	720	7935	10768	13602	1012	9522	12922	16323	1214	2.1/4"	3.1/2"	7674	10414	13155	959
M60	90	7076	9603	12130	842	9951	13504	17058	1185	11941	16205	20470	1422						
M64	95	8535	11583	14631	953	12002	16289	20575	1340	14403	19547	24690	1607	2.1/2"	3.7/8"	10691	14509	18327	1203
M68	100	10405	14121	17838	1093	14632	19858	25084	1537	17559	23830	30101	1844	2.3/4"	4.1/4"	13038	17694	22350	1333
M72	105	12530	17005	21480	1243	17620	23913	30206	1748										
M76	110	14926	20256	25587	1403	20989	28485	35981	1973										
M80	115	17608	30185	1572	1572									3"	4.5/8"	17104	23213	29321	1603
M85	120	21390	29029	36668	1797														
M90	130	25676	34847	44017	2038									3.1/4"	5"	21938	29774	37609	1898
M95	135	30500	41393	52286	2293									3.1/2"	5.3/8"	27607	37467	47326	2218
M100	145	35893	48712	61531	2564									3.3/4"	5.3/4"	34176	46382	58588	2563
M105	150	41886	56846	71805	2849									4"	6.1/8"	41712	56610	71507	2933
M110	155	48511	65837	83162	3150														

$\mu=0.10$  - Lubricated Bolts  
 $\mu=0.15$  - Semi Lubricated Bolts  
 $\mu=0.2$  - Dry Bolts

Newton - Meter Nm to Foot-Pounds lbf. ft. (1Nm = 0.738 lbf. ft.)  
 Kilogram - Force Meter to Newton - Meter (1 Kgm = 9.80 Nm)

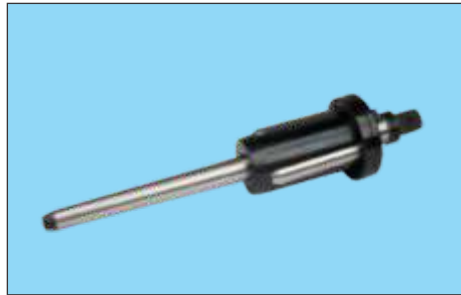
## OTHER PRODUCT RANGE :



### TUBE TOOLS



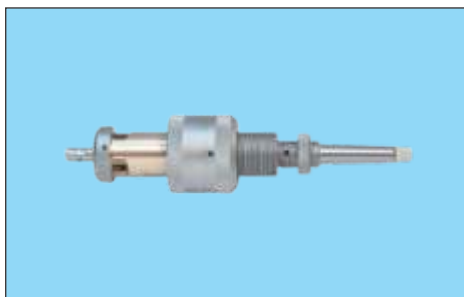
TUBE CLEANING EQUIPMENTS



TUBE EXPANDER



EXPANSION MACHINES



TUBE INSTALLATION TOOLS



EXPANSION SYSTEMS

### BEVELING MACHINE, BUNDLE PULLER, LINE BORING MACHINE



PIPE BEVELING MACHINE



PIPE CUTTING & BEVELING MACHINE



BUNDLE PULLER



PLATE BEVELING MACHINE



ELECTRIC TAPPING MACHINE



LINE BORING MACHINE



## NOTE

# Proudly Associated With...



## SHINGARE INDUSTRIES PVT. LTD.

Formerly known as Bharatiya Industries

- ✿ Manufacturer & Exporter of Tube Cleaners, Flexible Shafts, Tube Tools, Impact Sockets, Bolting Tools, Pipe Cold Cutting and Beveling Machines, Torque Tools, Grinding Tools, Tapping Tools, Hydraulic Torque Wrench, Electric Torque Wrench, Manual Torque Wrench & Torque Multiplier
- 📍 **Factory Add:** A-48 B Osiya Mataji Compound, Village Kalher, Retibunder Road, Tal. Bhiwandi, Dist. Thane - 421302, Maharashtra.
- 📍 **Head Off:** A-104, 1st Floor, Eastern Business District (Magnet/Neptune Mall), L.B.S. Marg, Bhandup (west), Mumbai - 40078.
- ☎ +91 77188 96512 | + 91 90290 05461 ✉ bharatflex@yahoo.com | spradip@tubecleaner.co.in
- 🌐 www.shingare.com | www.tubecleaner.co.in